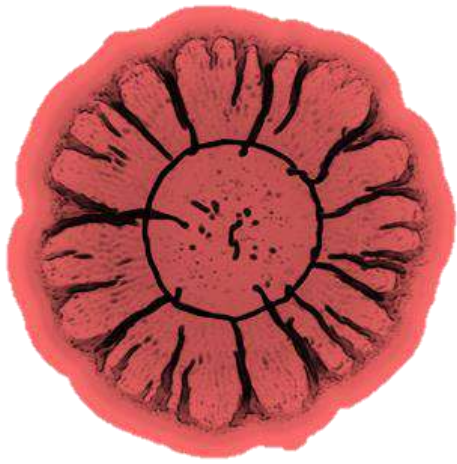


Presentation of research projects

“My research in 180 seconds”

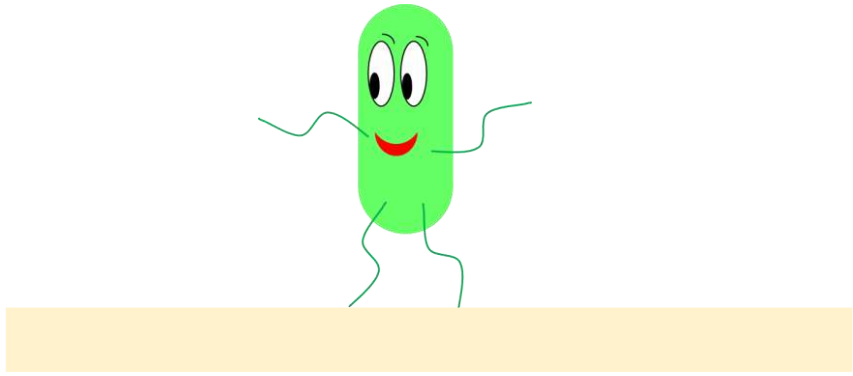


Mechanobiology of biofilms: the mechanical influence of the underlying surface

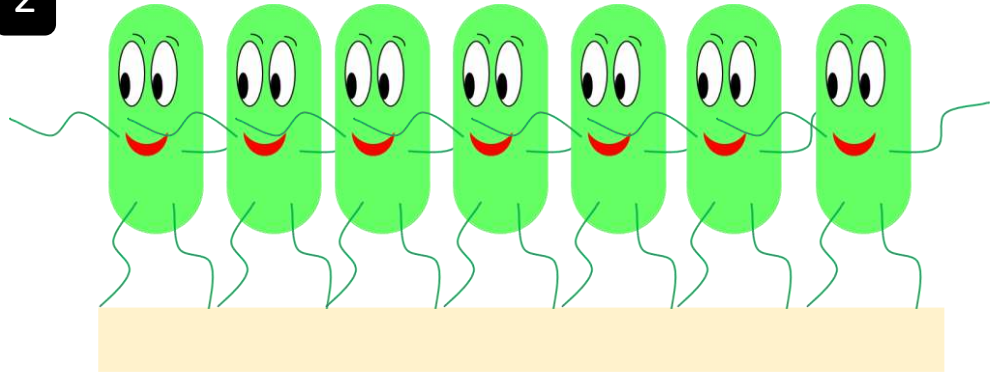


Clémentine Ferrari (PhD Student)
Max Planck Institute of Colloids and Interfaces – Potsdam

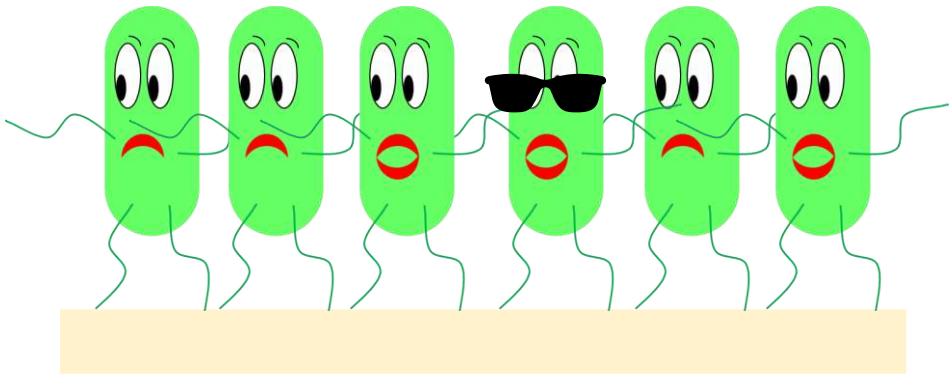
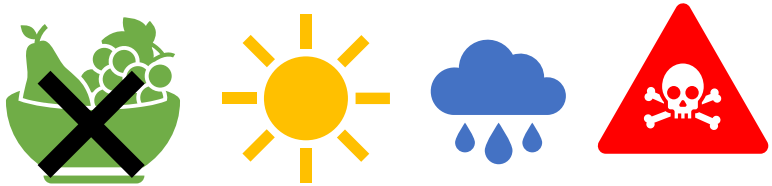
1



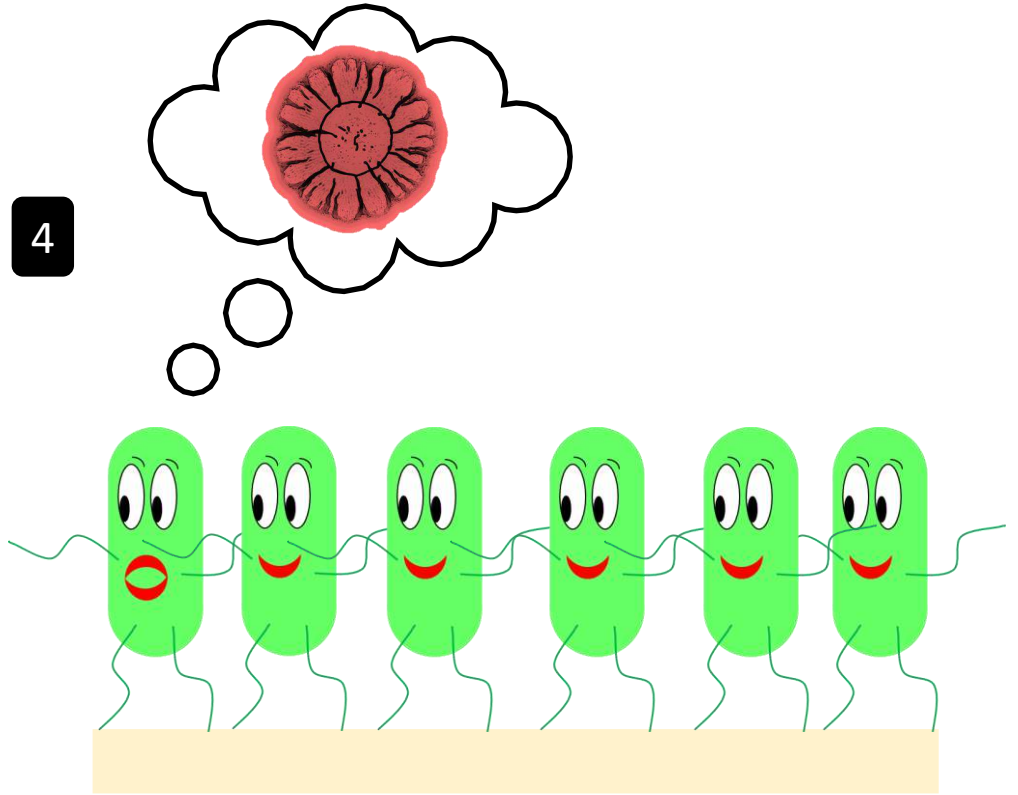
2

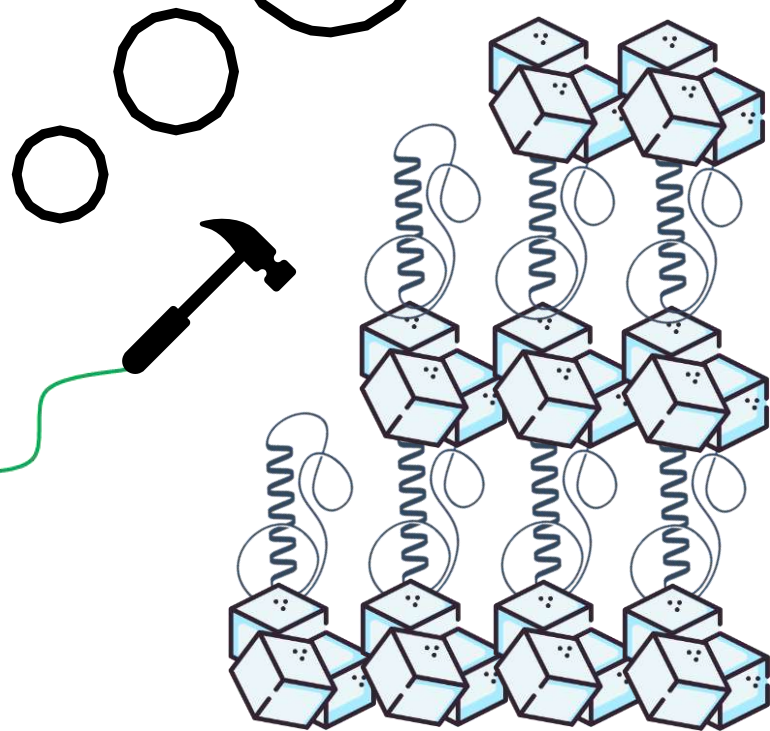
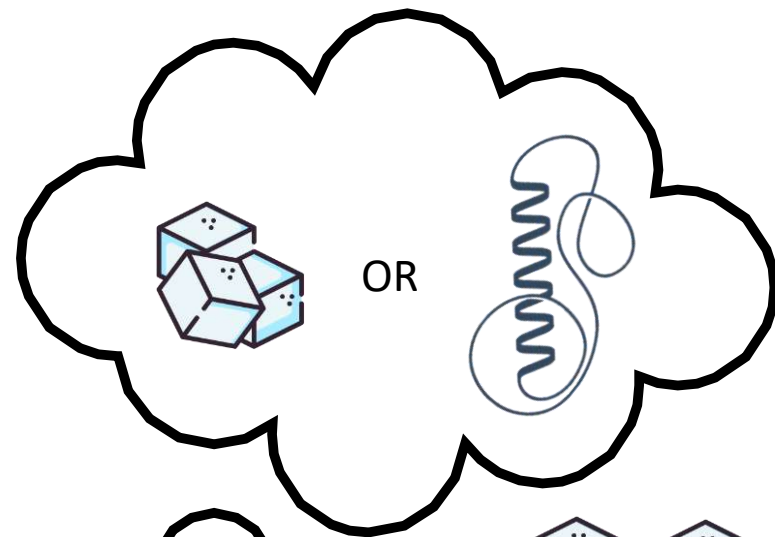
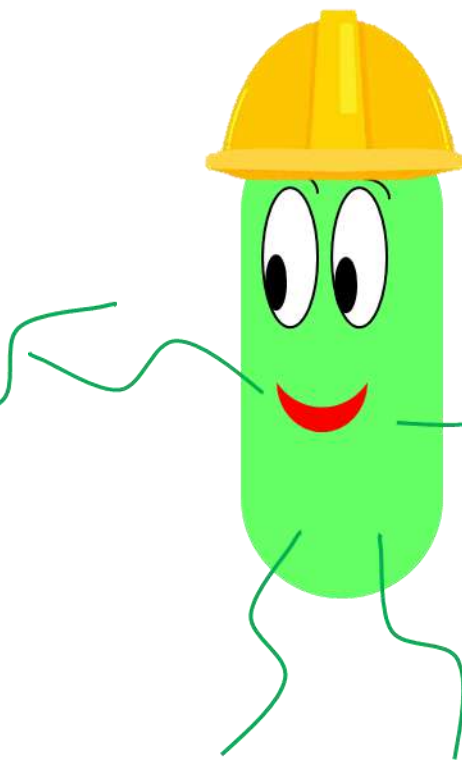
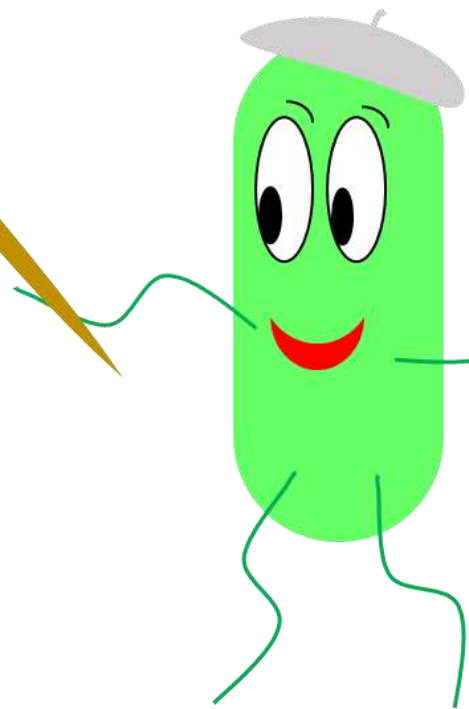
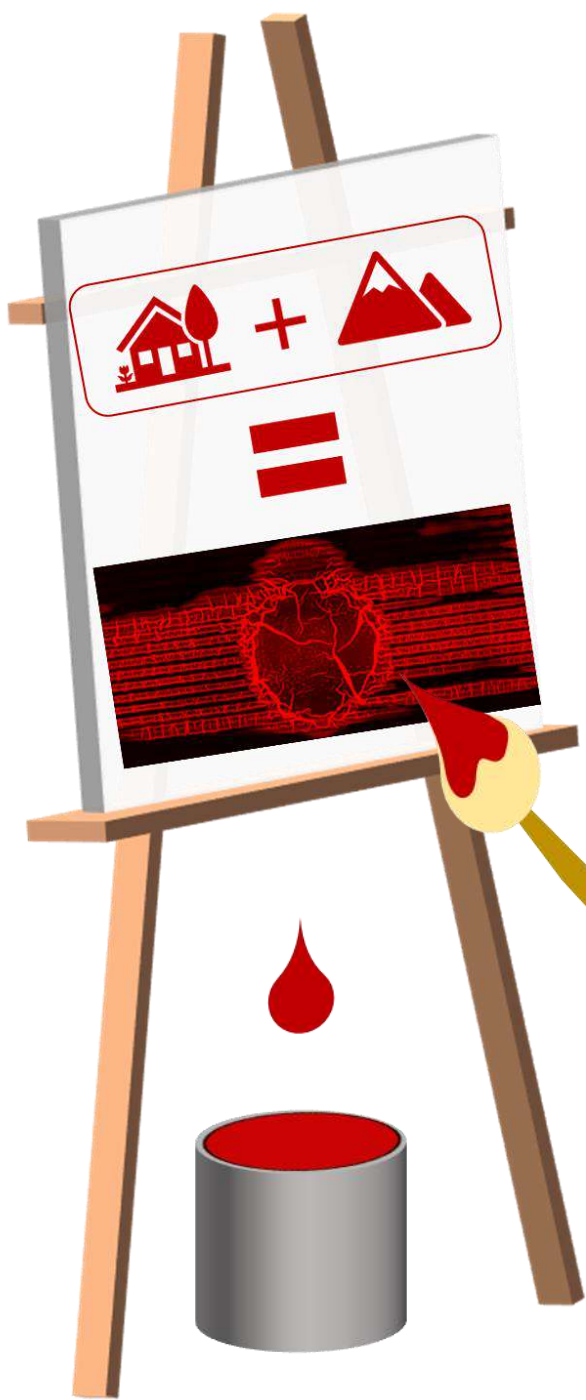


3



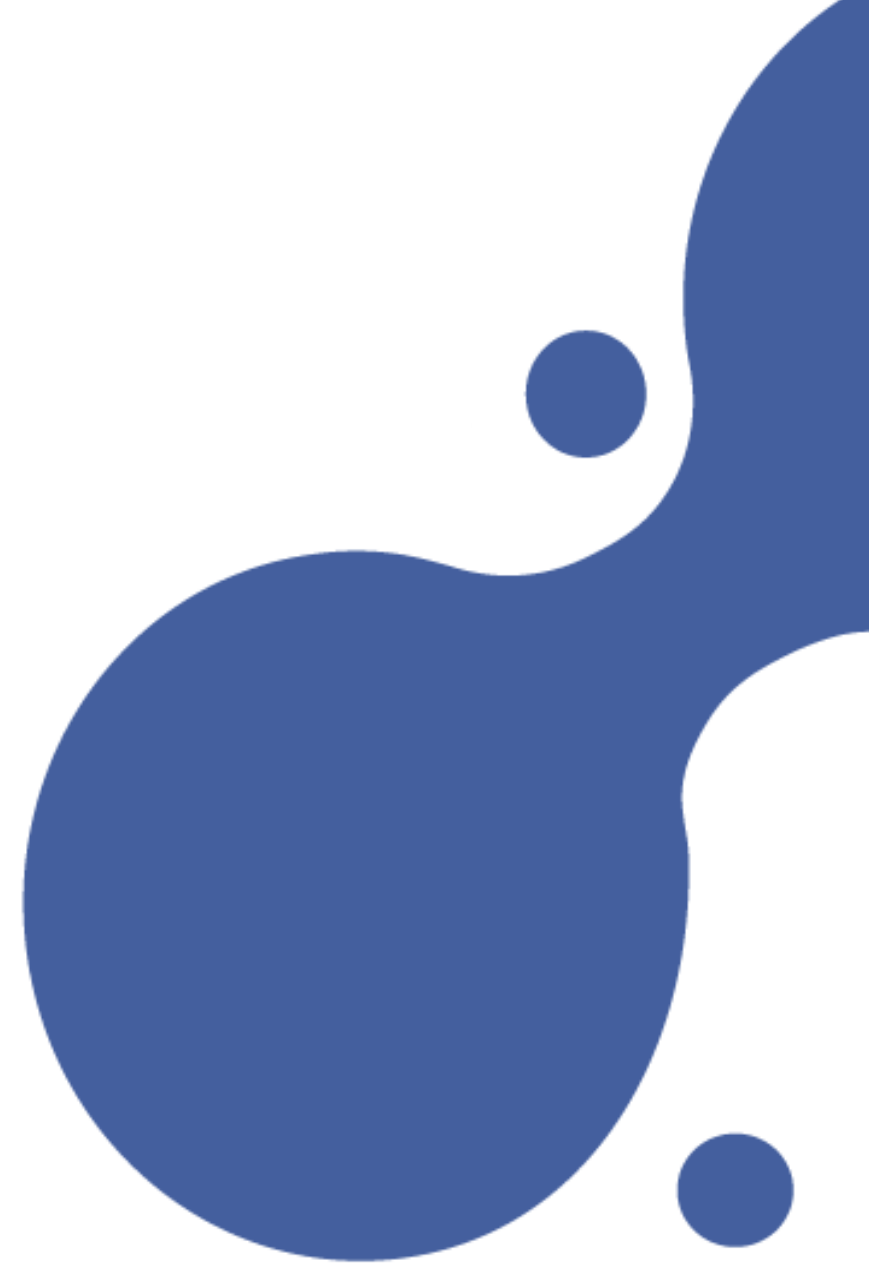
4





My research in 180 seconds

- **Farah Hasan**
- Humboldt Universität





COMING BACK DOWN TO EARTH: ENVIRONMENTAL STRATEGIES FOR MANAGING THE END-OF-LIFE OF SATELLITE

9th Franco-German Day for Young Researchers

Joséphine Koffler, German Aerospace Center (Institute of Maintenance, Repair and Overhaul)

**HOW MANY FLIGHTS
FROM BERLIN TO NEW YORK
EQUAL THE CO2 EMISSIONS...**



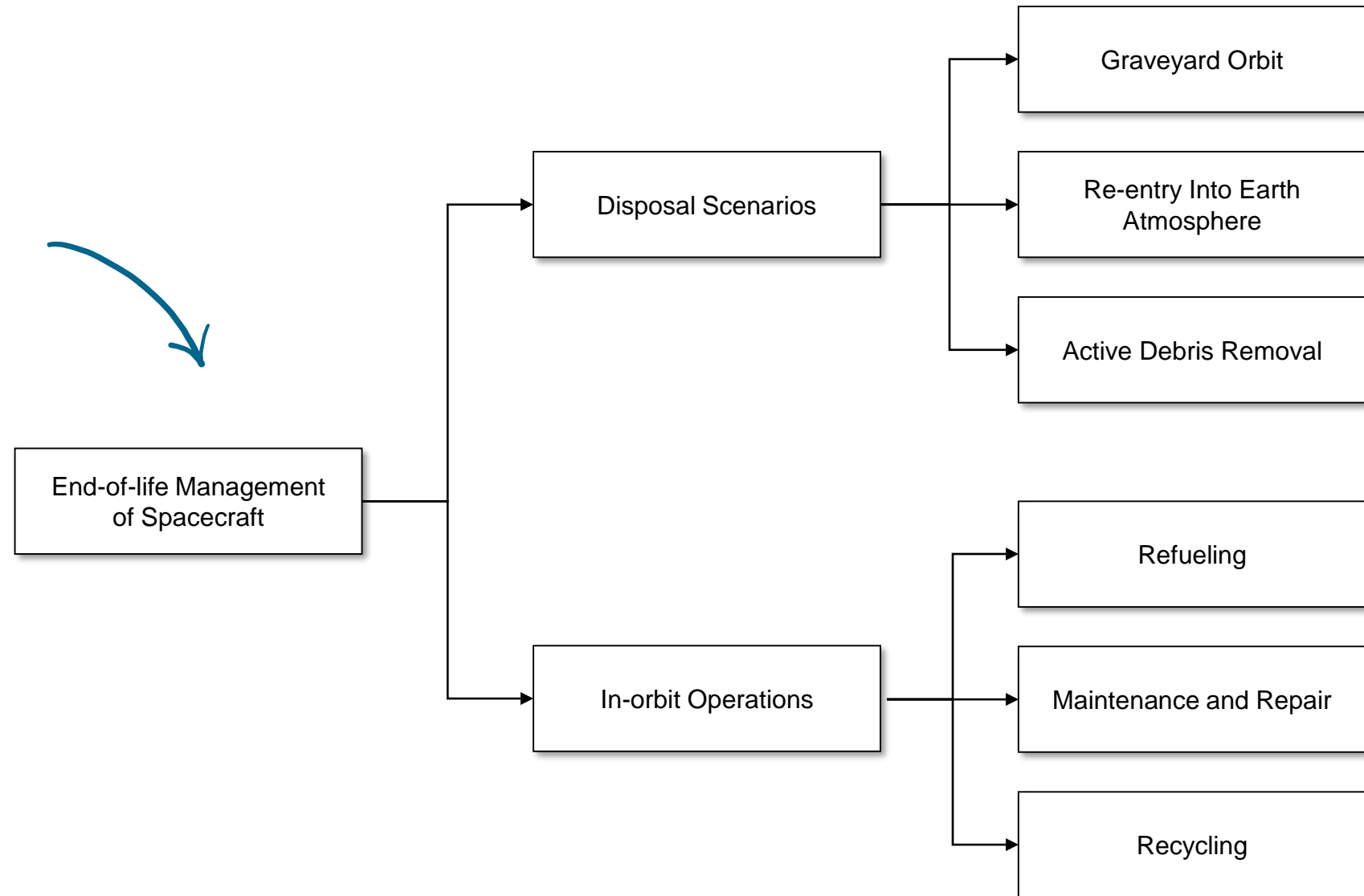
OR

**...OF SENDING A SATELLITE
TO LOW EARTH ORBIT?**



Life Cycle Assessment of satellite's end-of-life

Environmental impacts assessed through LIFE CYCLE ASSESSMENT tool



Coming and going in the "Théâtre Michel" of Saint-Petersburg

The making of an international acting career, from 1833 to 1918



Elisabeth Heid
(EPHE, Paris)

Mihajlovskij teatr [The Michel Theater], circa 1860, engraving, The Michel Theater, Saint-Pétersburg

Thesis
supervisors:
Jean-Claude Yon
Alexei Evstratov



*Lucien and Sacha Guitry in Saint-Petersburg,
1890, photography, private collection, Saint-Petersburg*

Lucien Guitry (1860-1925)

- Worked in Théâtre Michel from
1882 to 1891

Sacha Guitry (1885-1957)

-Was born and grew up in Saint
Petersburg

-Godfathered by Tsar Alexander III

Three axis:

- The study of the European networks that enabled Russia to recruit French artists
- The study of a new kind of "theatrical diplomacy"
- The study of new career strategies that are no longer national, but international in scope



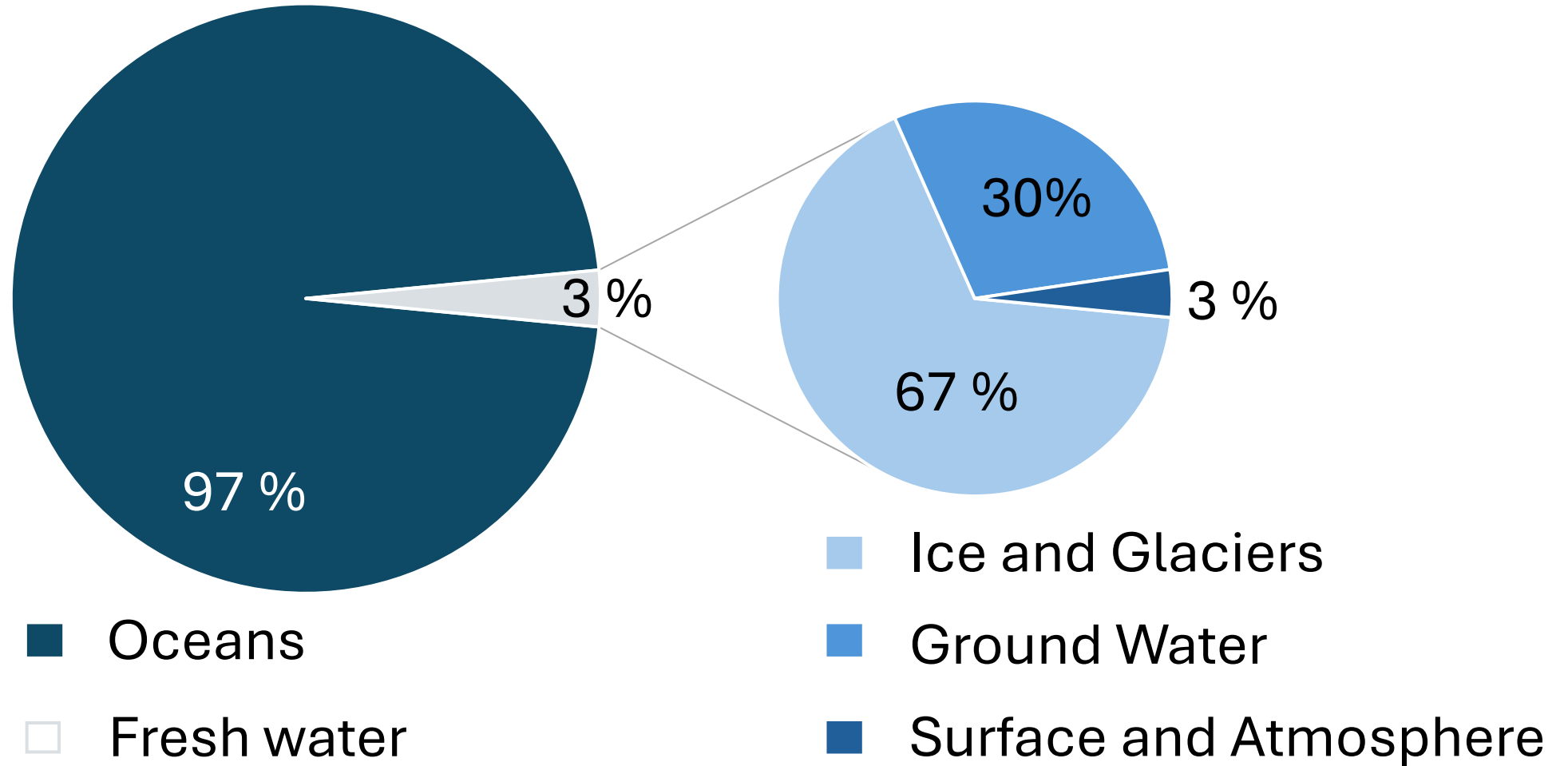
Potable water in times of the climate crisis



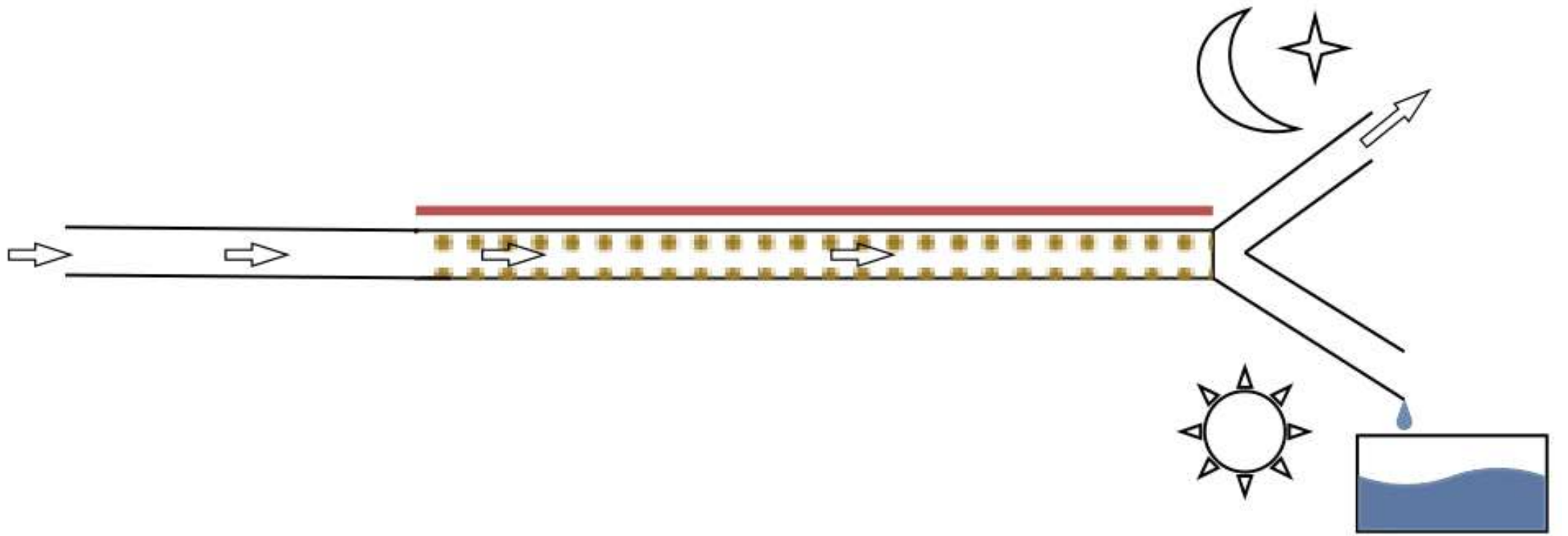
Johannes Müller, PhD student in Mechanical Engineering



Water resources on Earth



Problem



Solution