

# Deflexivity of the demonstratives in Old French (1250-1300)

Emergence from a medieval norm ?

*[Handwritten text from a medieval manuscript, likely Old French, showing dense script and some red ink markings.]*



# What is deflexivity?

- Flexion ? Flexivity ?
  - Use of infixes and suffixes to express syntactic and grammatical function (Gallmann s/a : 1)
    - (1) lat. ROS-A (Nominative - Subject, Feminin, Singular)
    - VS.
    - (2) lat. ROS-AM (Accusative – Direct Obj, Feminin, Singular)
- Deflexivity after Bouttineau (2010: 89)
  - Belongs to the Psycho-Mecanism of Language by G. Guillaume (posth. 1964)
  - Bouttineau (2010: 89): Diachronic occurrence of an autonomous marqueur for the explicit treatment of a grammatical parameter of the following word.
  - (3) lat. MUR-US (N. Sj., M., Sg. > a.fr. L-*i* mur-s (N. Sj., M., Sg.) > fr. L-e mur (M., Singular)

# History of the demonstratives

Marchello-Nizia (2004, 2012), Müller-Lancé (2021)

LATIN until 8. C.

>

A. FR. 8 – 13. C.

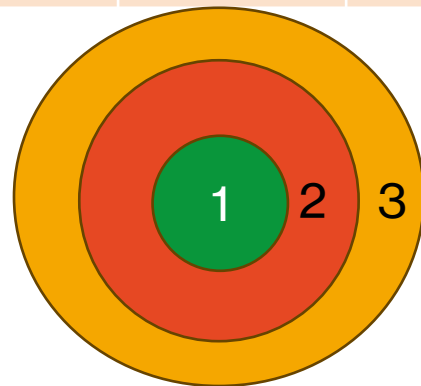
>

M. FR 13. C. -

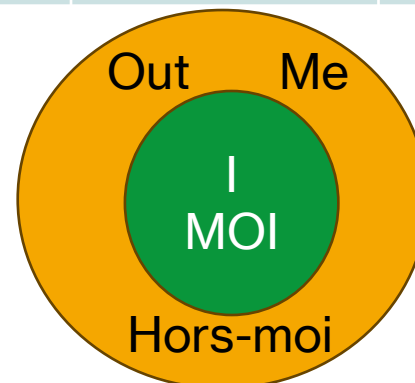
Case	2. P	3. P
NOM.	ISTE / ISTA	ILLE / ILLA
ACC.	ISTUM / ISTAM	ILLUM / ILLAM
ABL.	ISTO / ISTA /	ILLO / ILLA /

Csdr	Me / Moi	Out-me/ Hors-moi
C.S	cist/ceste	cil/cele
C.R.D	cest/cesti	cel/cele
C.R.I	cestui/cesti	celui/celi

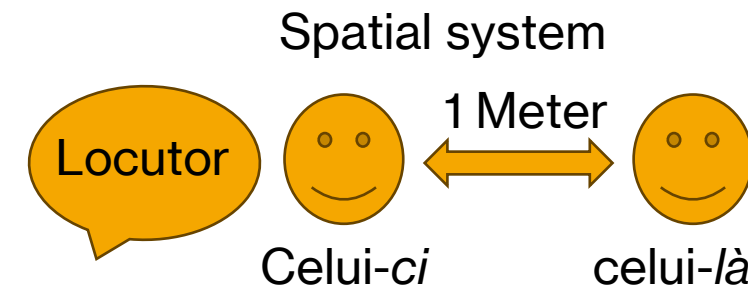
Specifier	Pronoun
Ce(t)/Cette	Celui-ci/-là Celle-ci/-là



<- Personal system



Sphere of belonging



# Objectives of the Master thesis

- Corpus of deeds of Beauvais (Picardy) from 1250 to 1300. We are preparing a diplomatic edition of those texts.

➔ According to K.Grübl (2013 ; 2015), the case inflection of French has become virtual in the ecclesiastical norm of documents, since in the same period (1250-1280) there was a secular norm that already gave the inflection. But it is now for the definitive articles.

- 1) With this work, we want to see if the demonstratives follow the same paths from the definitive articles in their paradigmatic restructuring.
- 2) Is the form ce+N+ci/là created through a reanalysis ?
  - (4) li deuandit relegieusne pooient bien goïr de [[ches coses [chi] devantdeusees]]
- 3) Is there a particular dialectal variant that has participated in creating a supra-regional norm?



# Bibliographie

Bottineau, D. (2010). « Typologie de la déflexivité. », In: *Langages*, 178, 89-113. <https://doi.org/10.3917/lang.178.0089>

Bürk, S. (2020). *Demonstrative Kennzeichnungen im Altfranzösischen: Funktionalität und Diachronie*. Berlin, Boston: De Gruyter. <https://doi.org/10.1515/9783110648393>

Gallmann, P. Flexion, s/a. Disponible à : [https://gallmann.unijena.de//Wort/Wort\\_Flexionsmittel.pdf](https://gallmann.unijena.de//Wort/Wort_Flexionsmittel.pdf). Consulté le 03/07/2024

Guillaume, G. (1964). *Langage et science du langage*. Hsg. Presses de l'Université de Laval

Grübl, K. (2013). « La standardisation du français au Moyen Âge: point de vue scriptologique. », In: *Revue De Linguistique Romane*, 77, 307-308, 343-383.

Grübl, Klaus. (2015). « Ce que les chartes nous apprennent sur la variation et le changement linguistiques au Moyen Âge: l'exemple de la déclinaison bicasuelle de l'ancien français. », In: *Revue de Linguistique Romane*, 79, 5-38.

Marchello-Nizia, C. (2012). Savoir lire ce qui est écrit : le rôle des démonstratifs et des possessifs dans le français médiéval. In J.-M. Bertrand, P. Boilley, J.-P. Genet, & P. Pantel (éds.), *Langue et histoire* (1-). Éditions de la Sorbonne. <https://doi.org/10.4000/books.pSORbonne.83208>

Marchello-Nizia, C. (2004). La sémantique des démonstratifs en ancien français : une neutralisation en progrès ? *Langue française*, 141, 69-84. <https://doi.org/10.3917/lf.141.0069>



**Blooms like it hot –  
but quagga mussels don't**

**Influence of invasive quagga mussels  
on cyanobacteria blooms during summer**

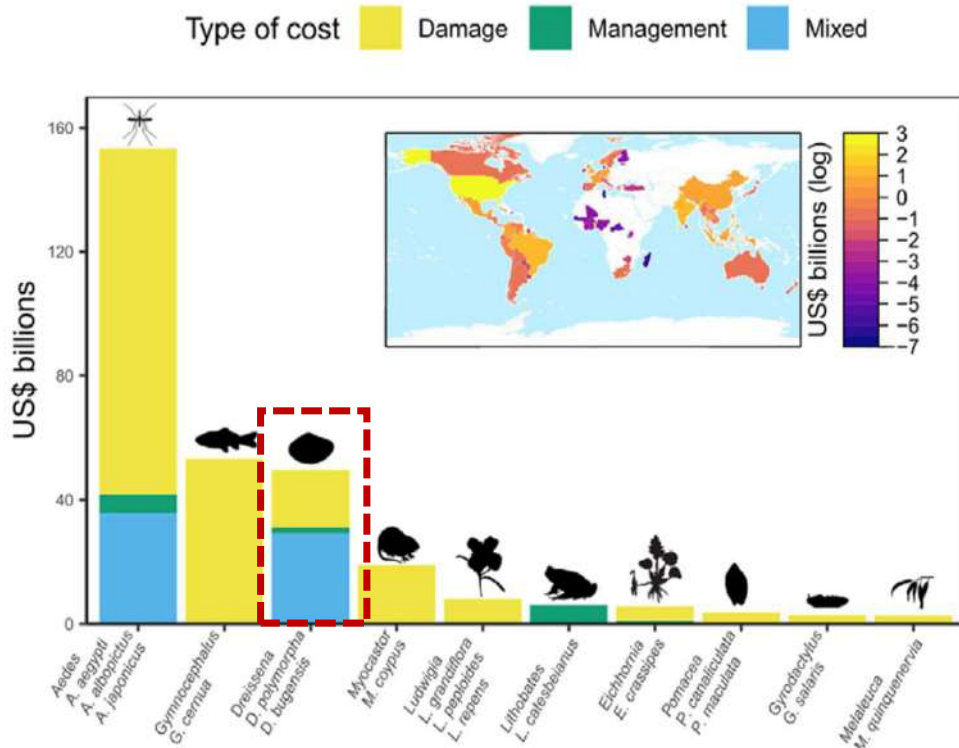
**Jonas Mauch  
Doctoral Student**

 [jonas.mauch@igb-berlin.de](mailto:jonas.mauch@igb-berlin.de)

 [jo\\_mauch](https://twitter.com/jo_mauch)

 [jonas.mauch@igb-berlin.de](https://www.linkedin.com/in/jonas.mauch@igb-berlin.de)

# Dreissenid mussels



Cuthbert et al., 2021

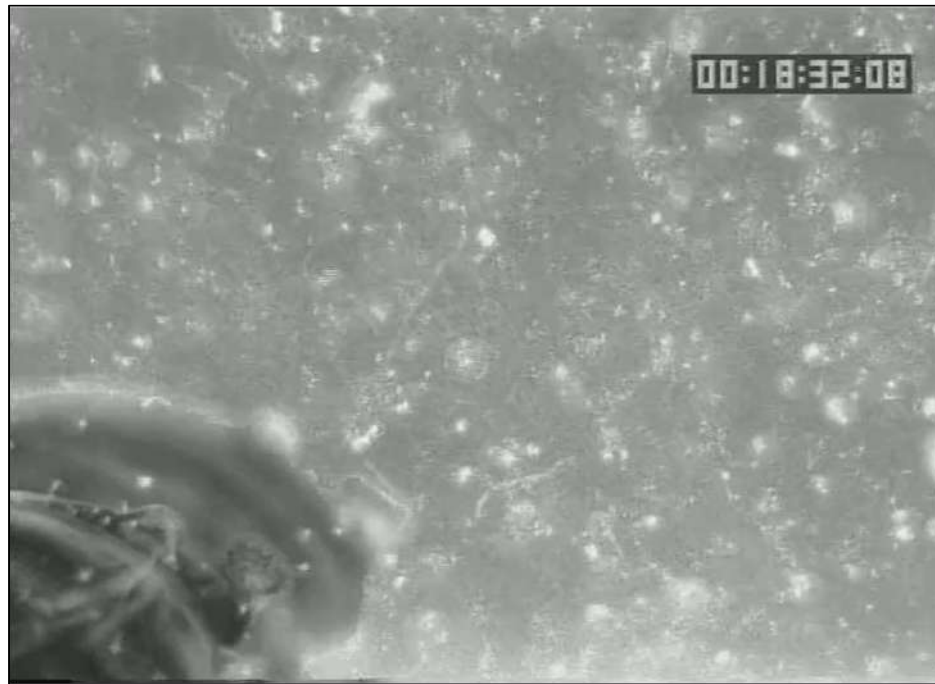


■ Native range ■ Invasive range ■ Potential Invasive range

Karatayev et al., 2015

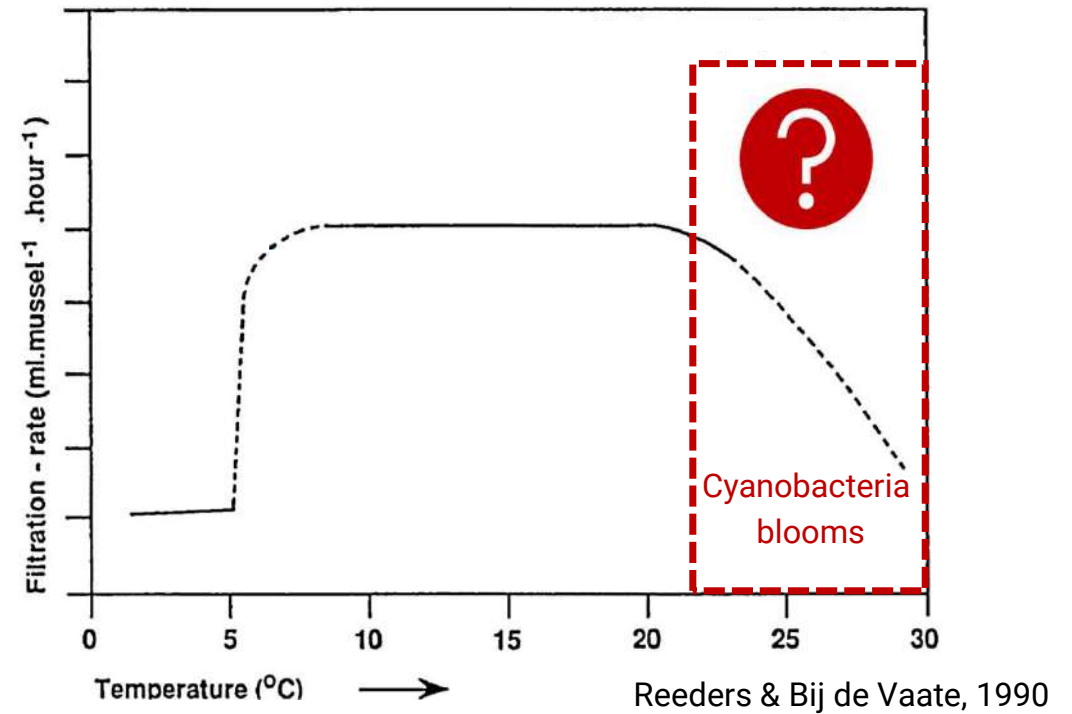
# Research Question

Selective feeding behavior



Vanderploeg et al., 2001

Temperature limits





## Lab experiments



